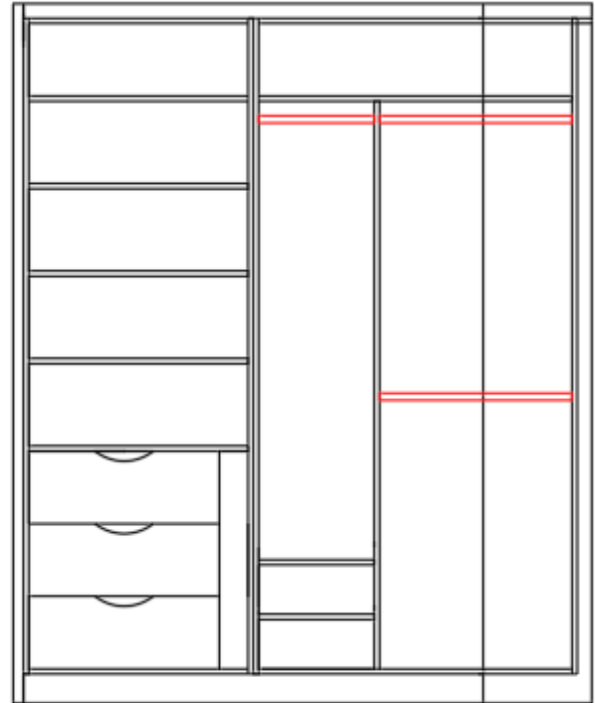
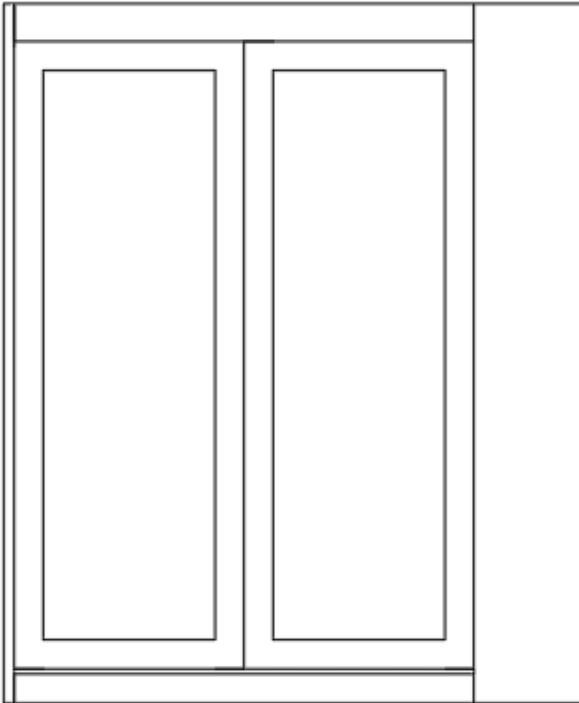


BATEMAN INTERIORS

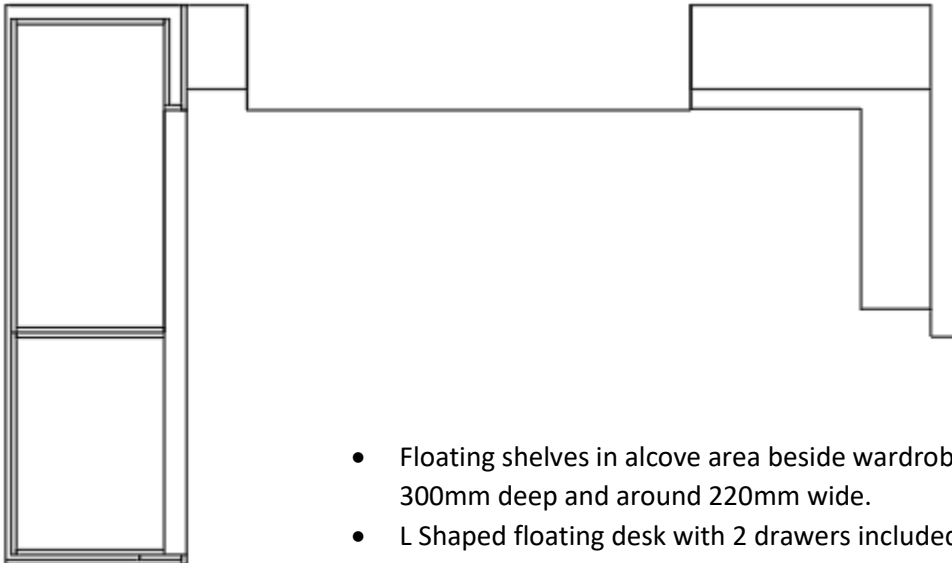
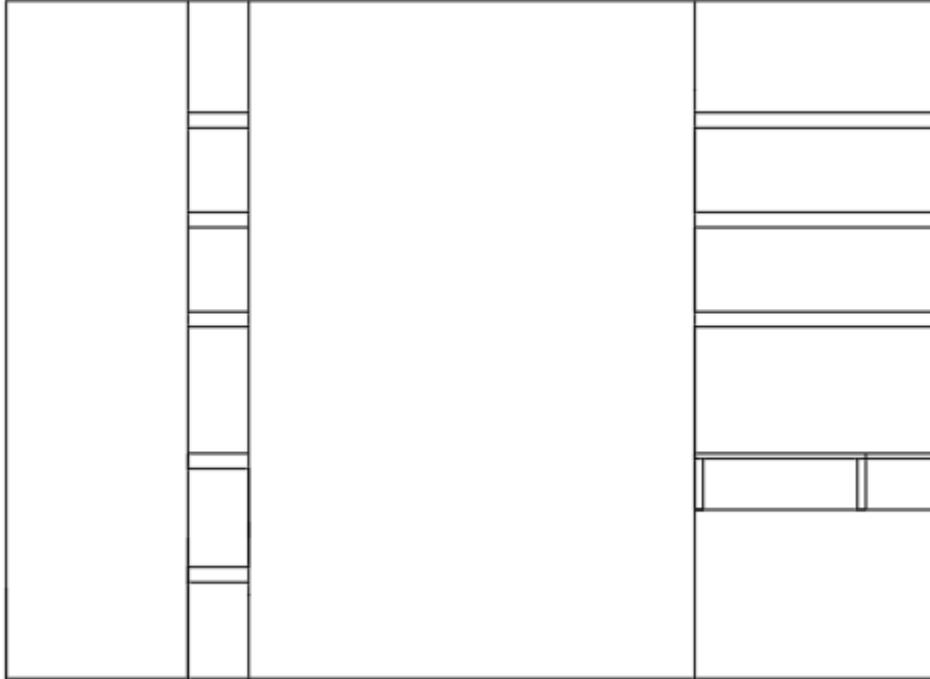
CARPENTRY & JOINERY SPECIALISTS



- Wardrobe to be fully built in and finishing up to the pipes (pipes to be left on show)
- 2 x sliding shaker style doors
- 3 x drawers with shelving above.
- 1 x long hanging space with shallow shelves below for shoes.
- 2 x hanging rails.

BATEMAN INTERIORS

CARPENTRY & JOINERY SPECIALISTS



- Floating shelves in alcove area beside wardrobe. Shelves to be 300mm deep and around 220mm wide.
- L Shaped floating desk with 2 drawers included in design.
- Return section of desk to be 250mm off the wall.
- Floating shelves in R/H/S alcove to be 300mm deep and full length of alcove area